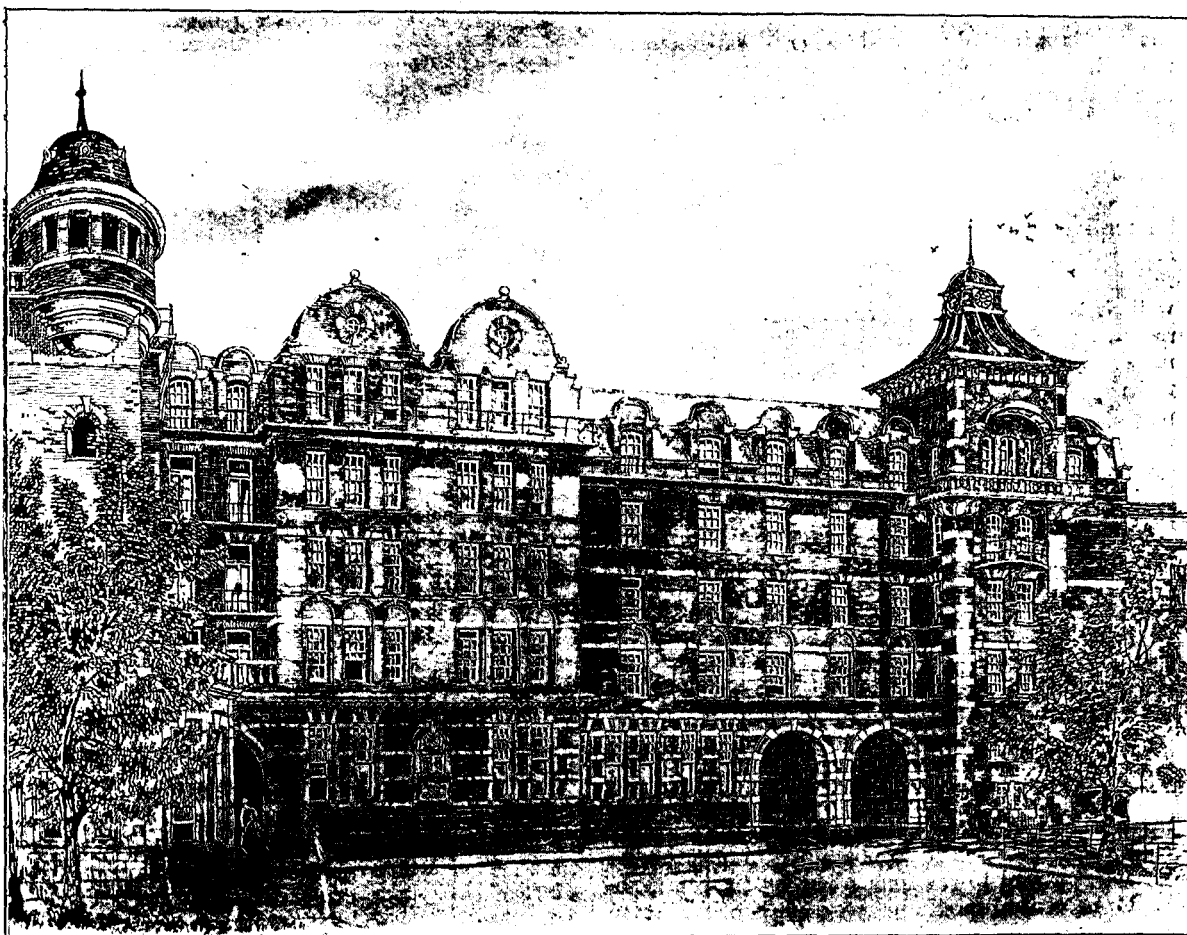


## The Hospital World.

### THE NEW NURSES' HOME AT GUY'S.

Guy's nurses are fortunate indeed in possessing so charming a home as that which is to be opened on the 7th inst. by T.R.H. the Prince and Princess of Wales, and named the Henriette Raphael Home, of which, by the kindness of the matron, Miss Swift, we are able to give a picture in this issue. The Home overlooks the "Park" and from

descending to the basement a pleasant surprise awaits one, for here is a noble swimming-bath which has been provided for the use of the nurses by a member of the Raphael family. It is shallow at one end and gradually increases in depth. The water is kept at a warm temperature. The walls of this great room, of which the floor space is occupied by the bath, are white and green, and a cooler, pleasanter place on a hot summer's day it would be difficult to imagine. There is little doubt that



THE NEW NURSES' HOME AT GUY'S.

the majority of the windows a pleasant view of green trees is obtainable. The quiet and restfulness of the whole place is delightful, and is the more remarkable when we realise that this great hospital is in the heart of the Borough not five minutes' walk from London Bridge, and from the great terminus of that name with all its traffic and turmoil. To the left of the entrance hall is a large general sitting-room, and to the right the great dining-hall, coloured a deep terra-cotta. On

the nurses will revel in their swimming-bath and will gain both in health and pleasure from the kindly provision made for them.

Throughout the building much attention has been bestowed upon the provision of adequate arrangements in case of fire. Fireproof doors are provided by means of which sections can be isolated, and at the top is a wide balcony from which iron staircases descend to the ground outside the house. The nurses' bed-rooms are on four

[previous page](#)

[next page](#)